

PARTS MANUAL

Conversion Track Systems (CTS)

CPB-486
2P-0243

Models 24D18C HD

Serial numbers: TRE0717029 & Later



TABLE OF CONTENTS

FOREWORD	2
Conversion Track System Specifications	2
Abbreviations	3
Location of Product Model and Serial Number (Identification plate)	3
Parts Ordering Procedure	3
24D18C HD AXLE SYSTEM	1-2
Track & Undercarriage	
S/N TRE0717029 And Later	1-2
Undercarriage & Track Tensioning	
S/N TRE0717029 And Later	1-4
Sprocket & Undercarriage Spindle	
S/N TRE0717029 and Later	1-6
Track Tensioning	
S/N TRE0717029 and Later	1-8
Track, Idler & Roller Wheels	
S/N TRE0717029 and Later	1-10
Axle, Idler Wheel	
S/N TRE0717029 and Later	1-12
Axle, Roller Wheel	
S/N TRE0717029 and Later	1-14
Kit, Scraper	1-16
SPECIAL TOOLS	2-2
CTS Service Tool Kit	2-2

FOREWORD

Conversion Track System Specifications

Tractor System, Front - 2 Mid-roller Axles without Suspension (198" Track Length)

Model	Track Part Number	Track Width (in)	Track Length (in)	Wheel base (in)	Overall Length	Capacity per pair (lbs)
24D18C HD	B24BK03379	24	198	56.7	85.2	46,000

FOREWORD (CONT'D)

Abbreviations

- FN** - Footnote is a column in the parts list used to communicate information that directly effects the part it's lined up with. The number used will correspond with information located below the parts list.
- UAR** - Use As Required (UAR) is used in the quantity column indicating the number of parts used is determined by service needs.
- REF** - Reference used in the part number column indicates the part has special service information. The location of this information is often referenced in the description column.
- NSS** - Not Serviced Separately (NSS) in a part number column indicates the part is not available for service.

Location of Product Model and Serial Number (Identification plate)



Identification Plate

CTS Serial Number Format

TRE 06 14 001

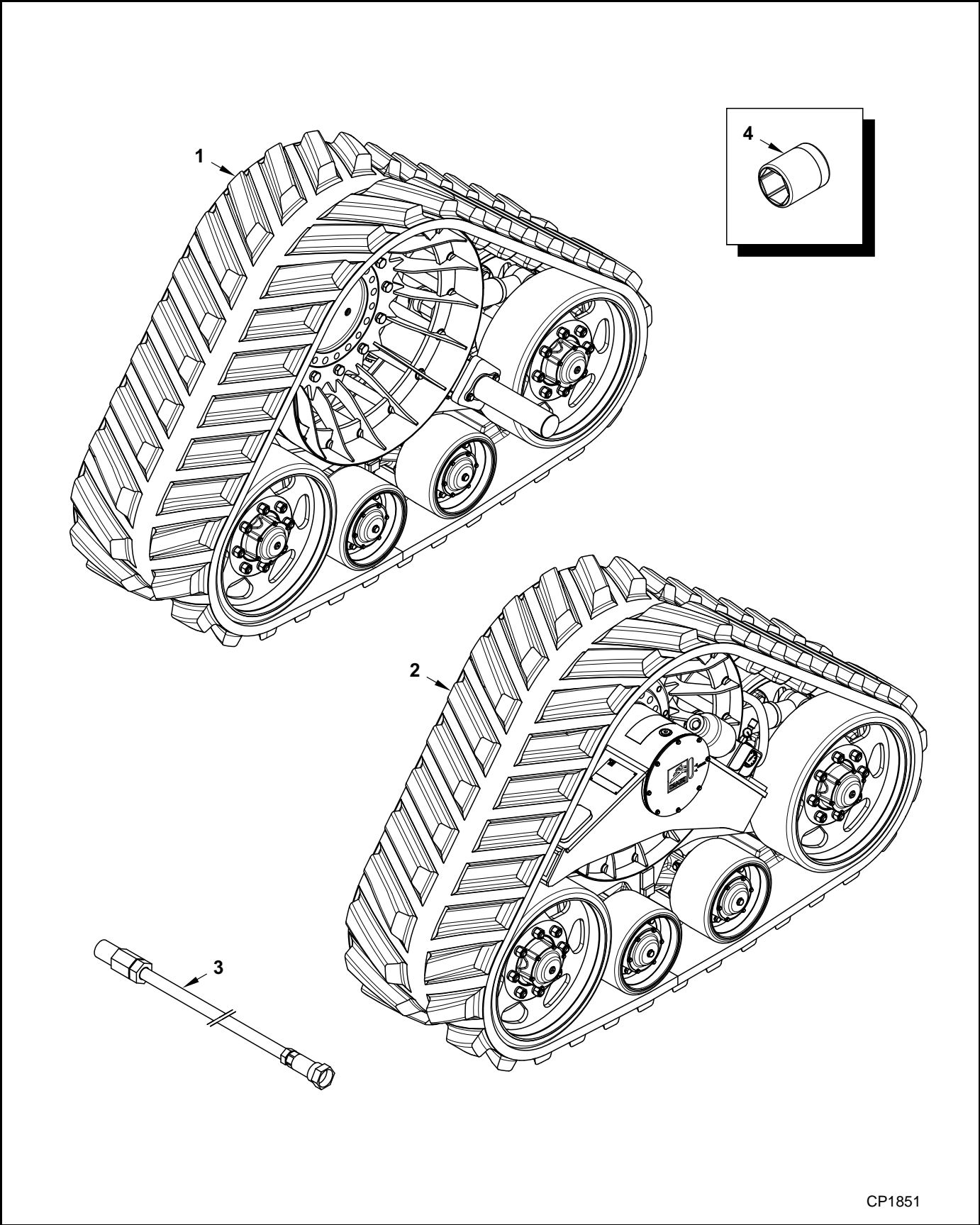
Model Month Year Sequential Number

Parts Ordering Procedure

When ordering parts for your Conversion Track System (CTS), please contact an authorized CTS system dealer in your area. If the parts are associated with a possible warranty claim, make sure that you contact the original dealer from which you purchased the CTS system. Make

sure to provide the CTS model, Serial number, Part number, Part description and quantity.

Undercarriage & Track Tensioning



CP1851

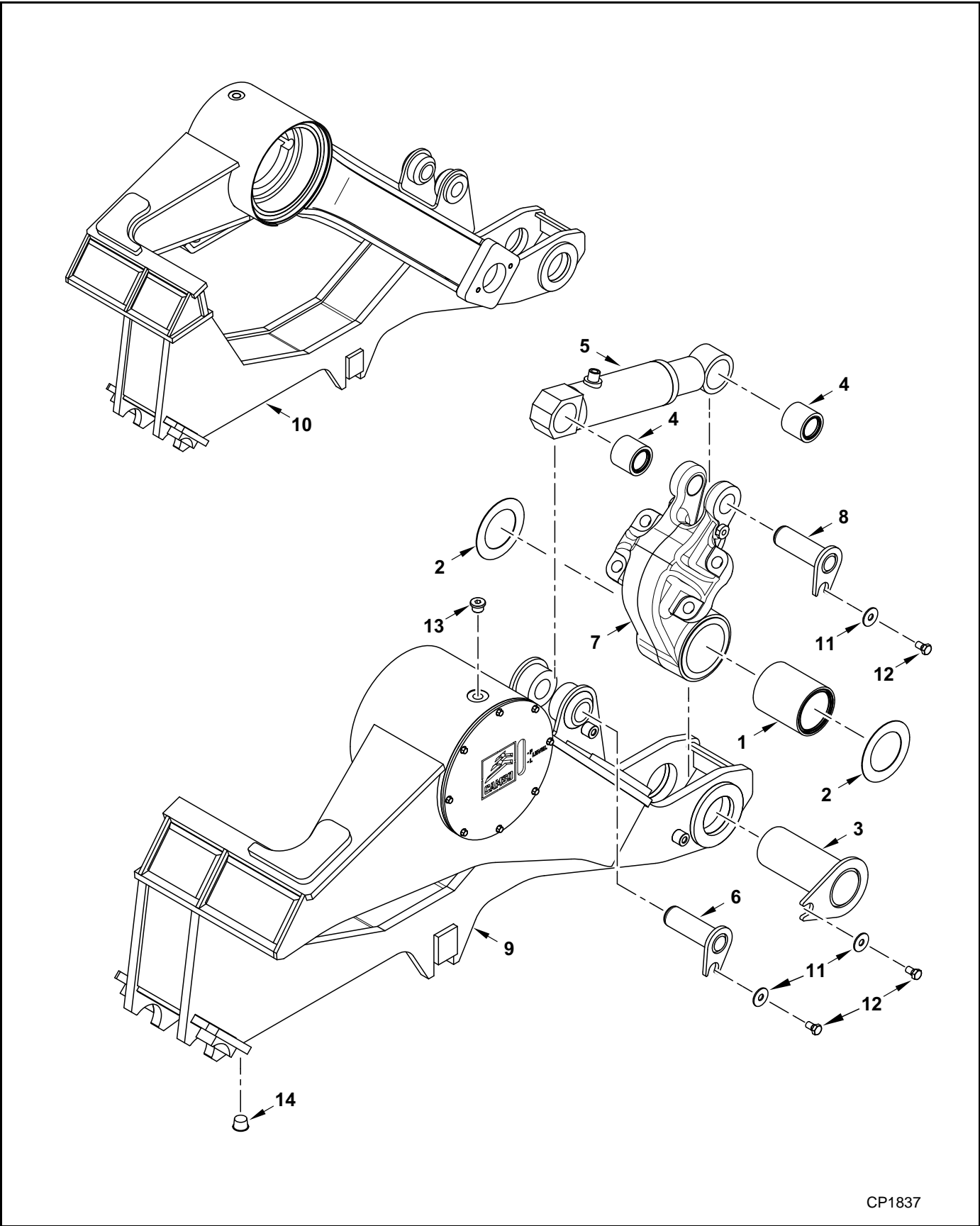
24D18C HD AXLE SYSTEM

Track & Undercarriage
S/N TRE0717029 And Later

(2A-1829-100)

Ref.	FN	Part Number	Qty.	Description
		2A-1829-100	1	UNDERCARRIAGE ASSY., Includes items 1 - 4
1		2A-1838-100	1	UNDERCARRIAGE ASSY., RH
2		2A-1838-200	1	UNDERCARRIAGE ASSY., LH
3		1000956	1	HOSE, Tensioning
4		N18-AB01	1	SOCKET

Undercarriage & Track Tensioning



CP1837

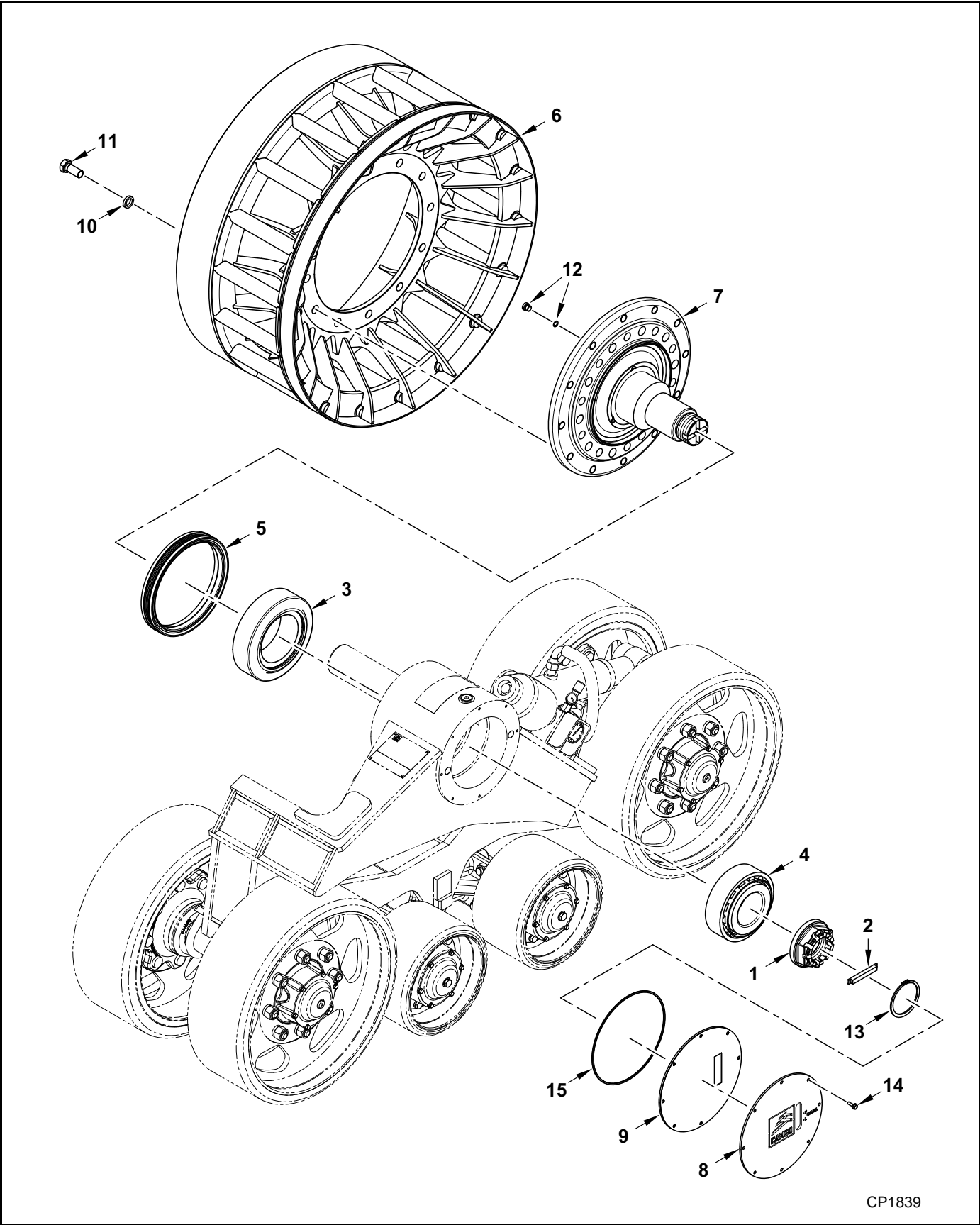
24D18C HD AXLE SYSTEM

Undercarriage & Track Tensioning S/N TRE0717029 And Later

(2A-1829-100)

Ref.	FN	Part Number	Qty.	Description
1		1000399	1	BEARING, Sliding
2		1000400	2	SHIM
3		1000451	1	PIN, Rod, Undercarriage-Rod
4		1000462	2	BEARING, Sliding
5		2H-0285	1	TENSIONER
6		1001302	1	PIN, Tensioner Cylinder
7		2C-2810-101	1	ARM, Tensioner
8		1001413	1	PIN, Piston, Tensioner
9		2S-1589-101	1	FRAME, Undercarriage, LH
10		2S-1576-101	1	FRAME, Undercarriage, RH
11		2F-0272	3	WASHER, M12 Large
12		2F-0278	3	BOLT, Hex, M12 x 20, CI 8.8
13		2H-0173	2	PLUG, 1/2" G
14		2M-0383	2	PLUG, Tapered, 25mm

Sprocket & Undercarriage Spindle



CP1839

24D18C HD AXLE SYSTEM

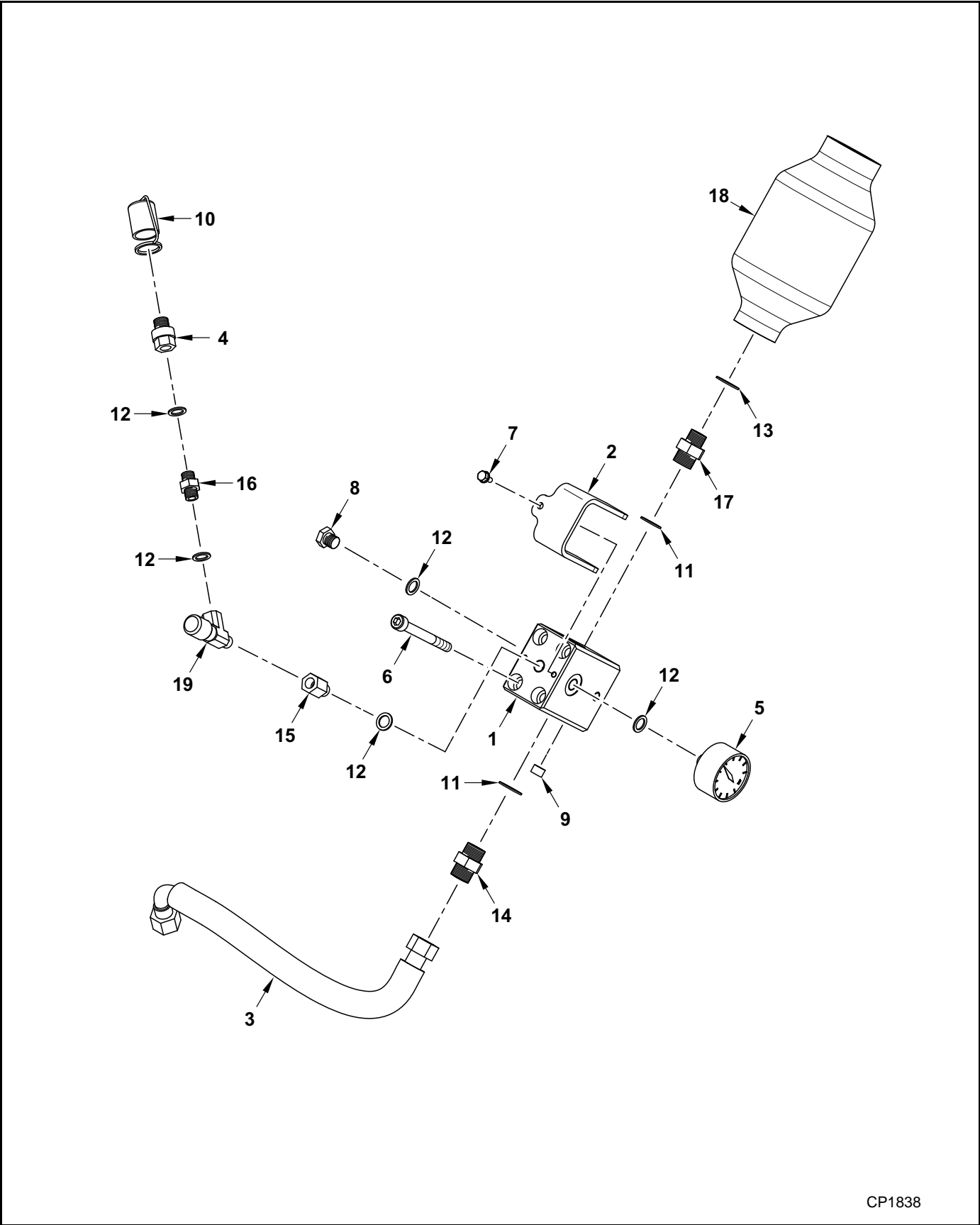
Sprocket & Undercarriage Spindle

S/N TRE0717029 and Later

(2A-1829-100)

Ref.	FN	Part Number	Qty.	Description
1		1000113	1	NUT, Spindle
2		1000114	1	NUT, Lock, Spindle
3		2B-0170	1	BEARING
4		2B-0173	1	BEARING
5		2J-0219	1	SEAL, Mechanical
6		2S-1595-101	1	SPROCKET
7		2C-4412-101	1	SPINDLE
8		2C-4287-101	1	COVER, Logo
9		2C-4351-102	1	COVER, Polycarbonite
10		2F-0325	12	WASHER, Nord-lock, M20
11		2F-0462	12	BOLT, Hex, M20 x 40, CI 10.9
12		2H-0243	3	PLUG, M14
13		2F-0300	1	RING, Retaining
14		2F-0537	8	SCREW, M6 x 16
15		2J-0125	1	O-RING, 3.53 x 248

Track Tensioning



CP1838

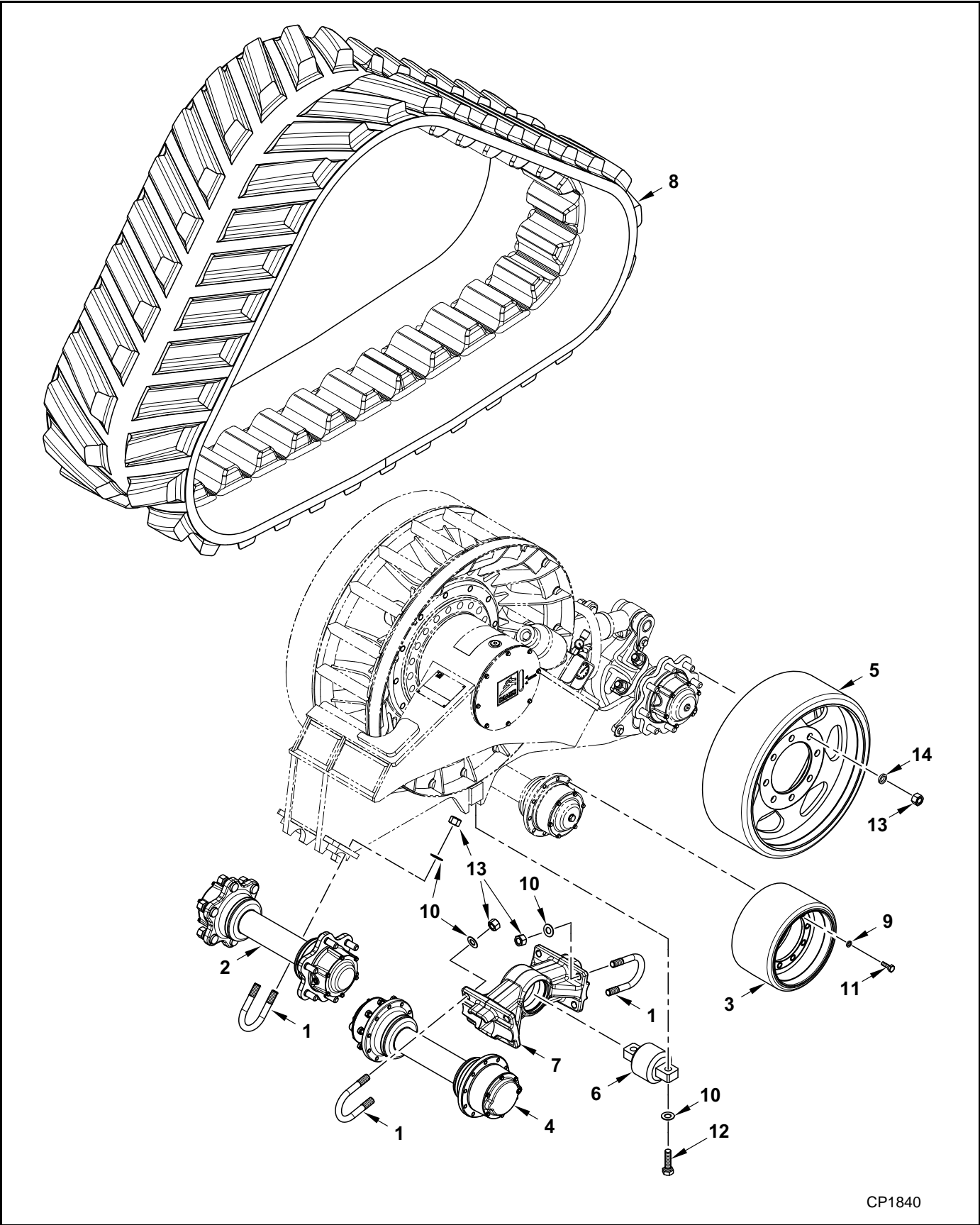
24D18C HD AXLE SYSTEM

Track Tensioning
S/N TRE0717029 and Later

(2A-1829-100)

Ref.	FN	Part Number	Qty.	Description
1		1002036	1	MANIFOLD
2		1000573	1	COVER, Manifold
3		1001309	1	HOSE, Tensioner
4		2H-0191	1	FASTENER, Male, 1/4" BSP
5		2H-0190	1	GAUGE, Pressure
6		2F-0473	4	BOLT, Hex Socket, M10 x 70, CI 8.8
7		2F-0295	1	BOLT, Hex Flg., M6 X 12, CI 8.8
8		2H-0175	1	PLUG, 1/4" BSP
9		2H-0177	2	PLUG, M10
10		2H-0192	1	PLUG, Fastener, 1/4" BSP
11		2F-0303	2	WASHER, G1/2"
12		2F-0304	5	WASHER, G1/4"
13		2F-0306	1	WASHER, M18
14		2H-0180	1	FITTING
15		2H-0182	1	FITTING
16		2H-0183	1	FITTING
17		2H-0184	1	FITTING
18		2H-0194	1	ACCUMULATOR, Nitrogen
19		2H-0188	1	VALVE

Track, Idler & Roller Wheels



CP1840

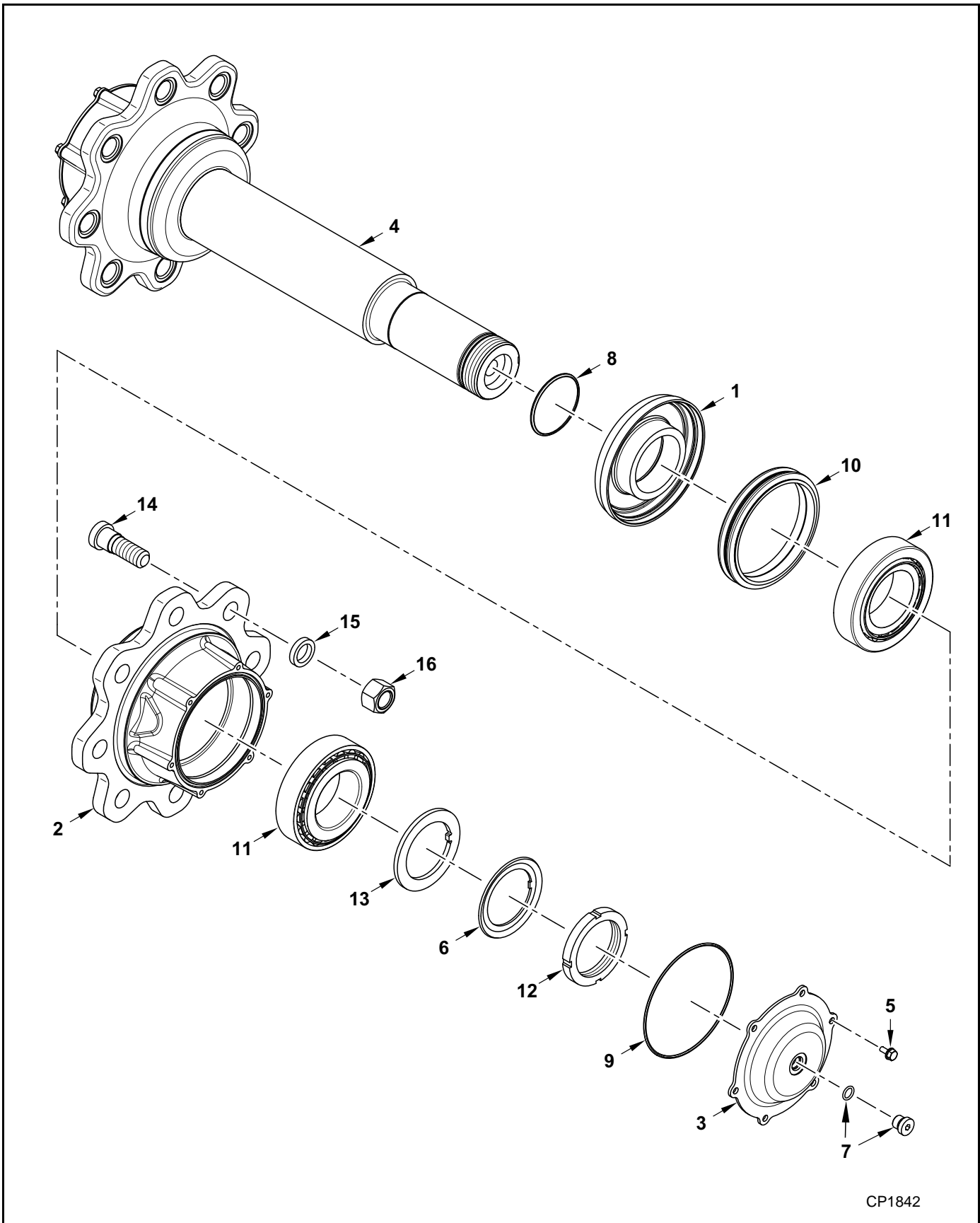
24D18C HD AXLE SYSTEM

Track, Idler & Roller Wheels
S/N TRE0717029 and Later

(2A-1829-100)

Ref.	FN	Part Number	Qty.	Description
1		1000119	8	U-BOLT
2		2A-1314-101	2	AXLE ASSY., Idler Wheel, 24" Track (8 bolt hole), See page 1-12
3		1000175	4	WHEEL, Roller, PU, 24" Track
4		2A-1853-101	2	AXLE ASSY., Roller Wheel, 24" Track, See page 1-14
5		5W-0375	4	WHEEL, Idler, 24" Track (8 bolt hole)
		1001026COMPL	4	ARM ASSY., Pivot, Includes items 6 & 7
6		NSS	1	JOINT, Rubber
7		NSS	1	ARM, Pivot
8		B24BK03379	1	TRACK, Rubber, 24" Wide
9		2F-0326	40	WASHER, Nord-lock, M12
10		2F-0275	18	WASHER, Contact, M20
11		2F-0282	40	BOLT, Hex, M12 x 35, CI 10.9
12		2F-0158	2	BOLT, Hex, M20 x 70, CI 10.9
13		2F-0296	40	NUT, Hex, M20
14		2F-0325	32	WASHER, Nord-lock, M20

Axle, Idler Wheel



CP1842

24D18C HD AXLE SYSTEM

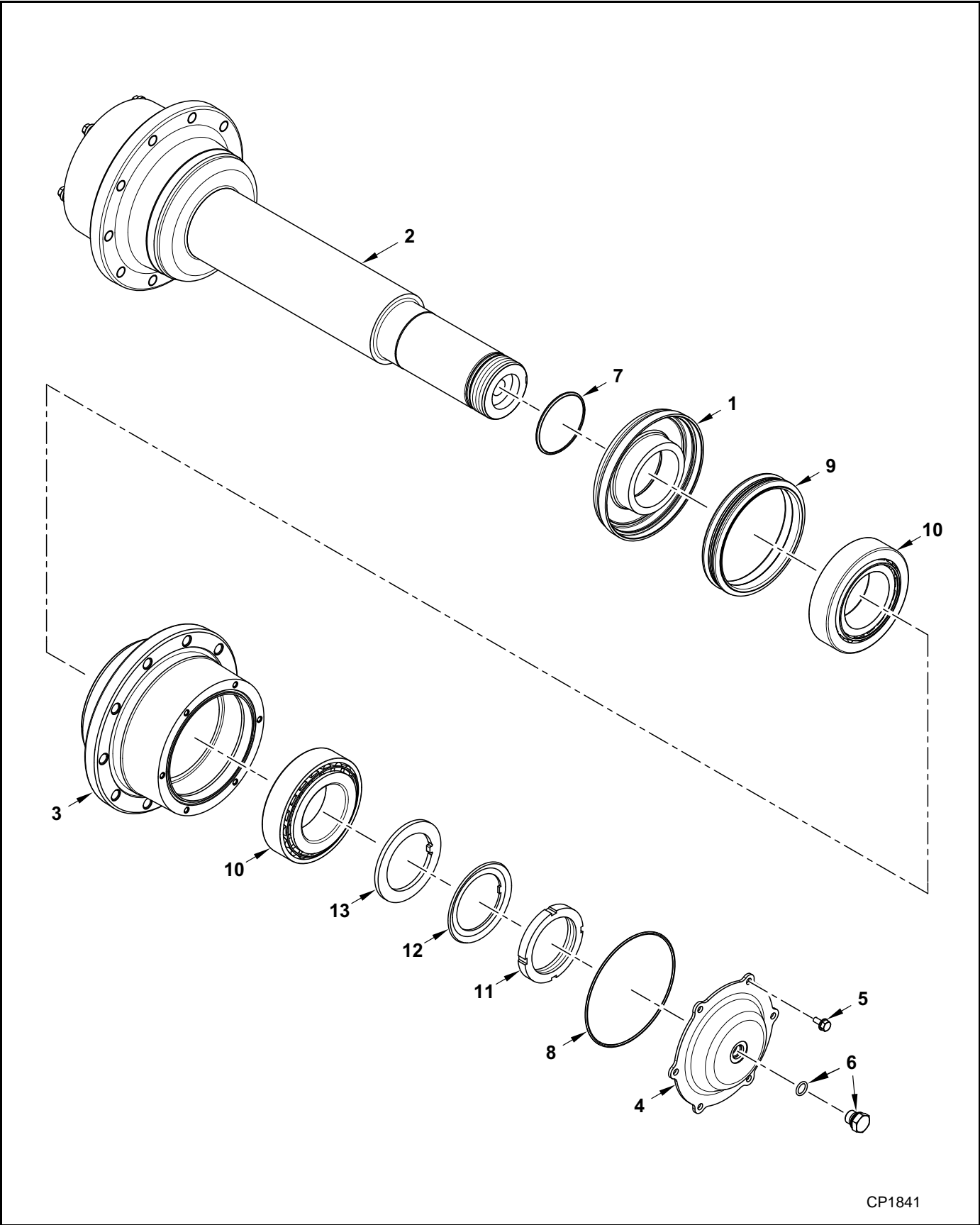
Axle, Idler Wheel
S/N TRE0717029 and Later

(2A-1829-100)

Ref.	FN	Part Number	Qty.	Description
		2A-1314-101	2	AXLE ASSY., Idler Wheel, 24" Track, Includes items 1 - 16
1	1	1000122	2	RING, Axle Collar
2		2C-2072-100	2	HUB
3		2C-2956-101	2	CAP, Hub
4	1	2C-2951-100	1	AXLE, Idler
5		2F-0295	12	BOLT, Hex Flg., M6 x 12, CI 10.9
6		2F-0302	2	WASHER, Lock, M65
7		2H-0243	2	PLUG, M14
8	1	2J-0122	2	O-RING, 2.50 x 65
9		2J-0123	2	O-RING, 2.62 x 126
10		2J-0211	2	SEAL, Mechanical
11		2B-0171	4	BEARING, Taper Roller
12		2F-0301	2	NUT, Lock, M65
13		2C-2923-100	2	WASHER, Locking Tab
14		2F-0298	12	BOLT, Stud, M20 x 60, CI 10.9
15		2F-0325	12	WASHER, Nord-lock, M20
16		2F-0296	12	NUT, M20

1 - Service with Complete Axle 2A-1314-101.

Axle, Roller Wheel



CP1841

24D18C HD AXLE SYSTEM

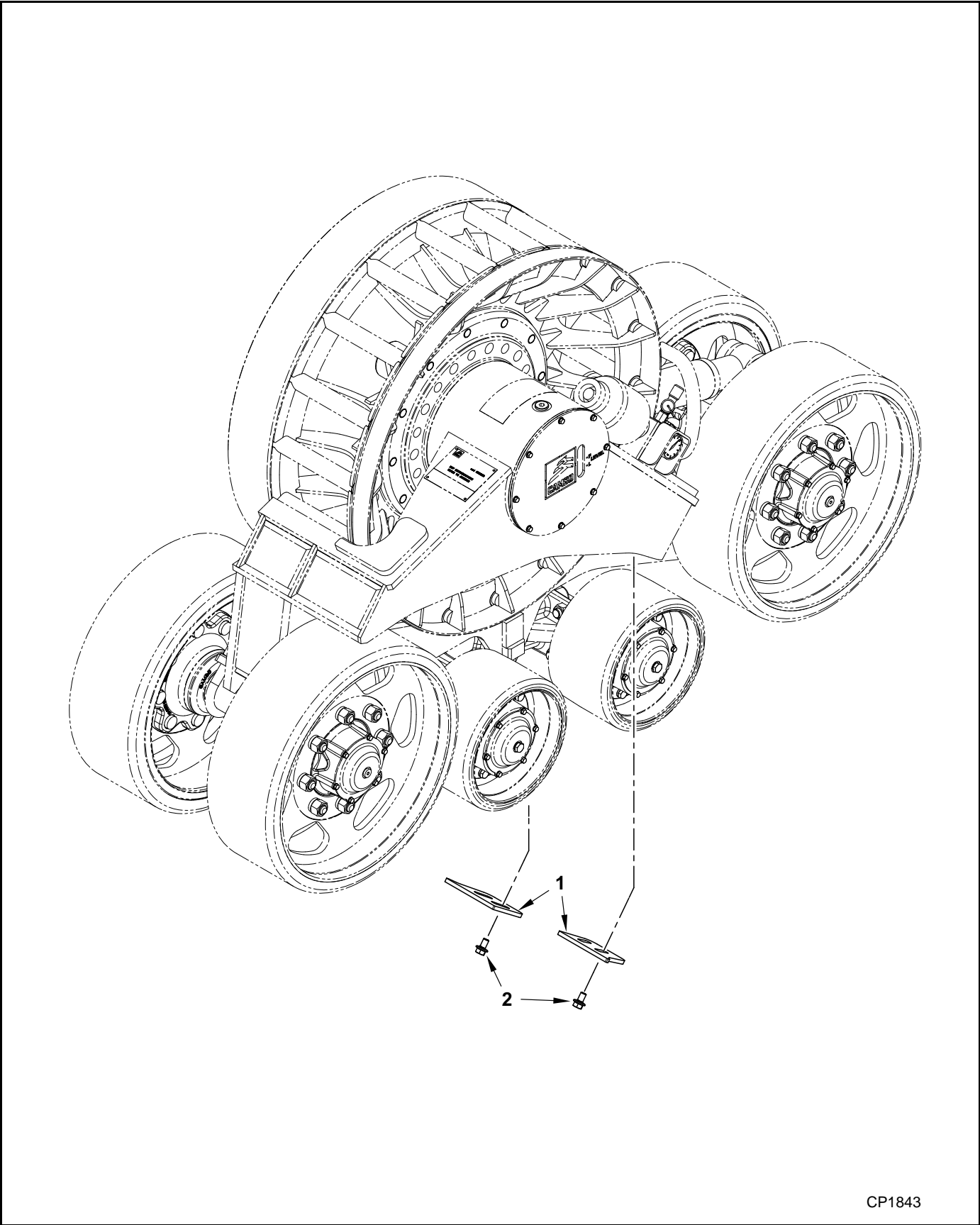
Axle, Roller Wheel
S/N TRE0717029 and Later

(2A-1829-100)

Ref.	FN	Part Number	Qty.	Description
		2A-1853-101	2	AXLE ASSY., Roller Wheel, 24" Track, Includes items 1 - 13
1	1	1000122	2	RING, Collar
2	1	2C-2951-100	1	AXLE
3		2C-2952-101	2	HUB
4		2C-2956-101	2	CAP, Hub
5		2F-0295	12	BOLT, Hex Flg., M6 x 12, Cl 8.8
6		108609500	2	PLUG, M14
7	1	2J-0122	2	O-RING, 2.50 x 65
8		2J-0123	2	O-RING, 2.62 x 126
9		2J-0211	2	SEAL, Mechanical Face
10		2B-0171	4	BEARING, Taper Roller
11		2F-0301	2	NUT, Lock, M65
12		2F-0302	2	WASHER, Lock, M65
13		2C-2923-100	2	WASHER, Locking Tab

1 - Service with Complete Axle 2A-1853-101.

Kit, Scraper



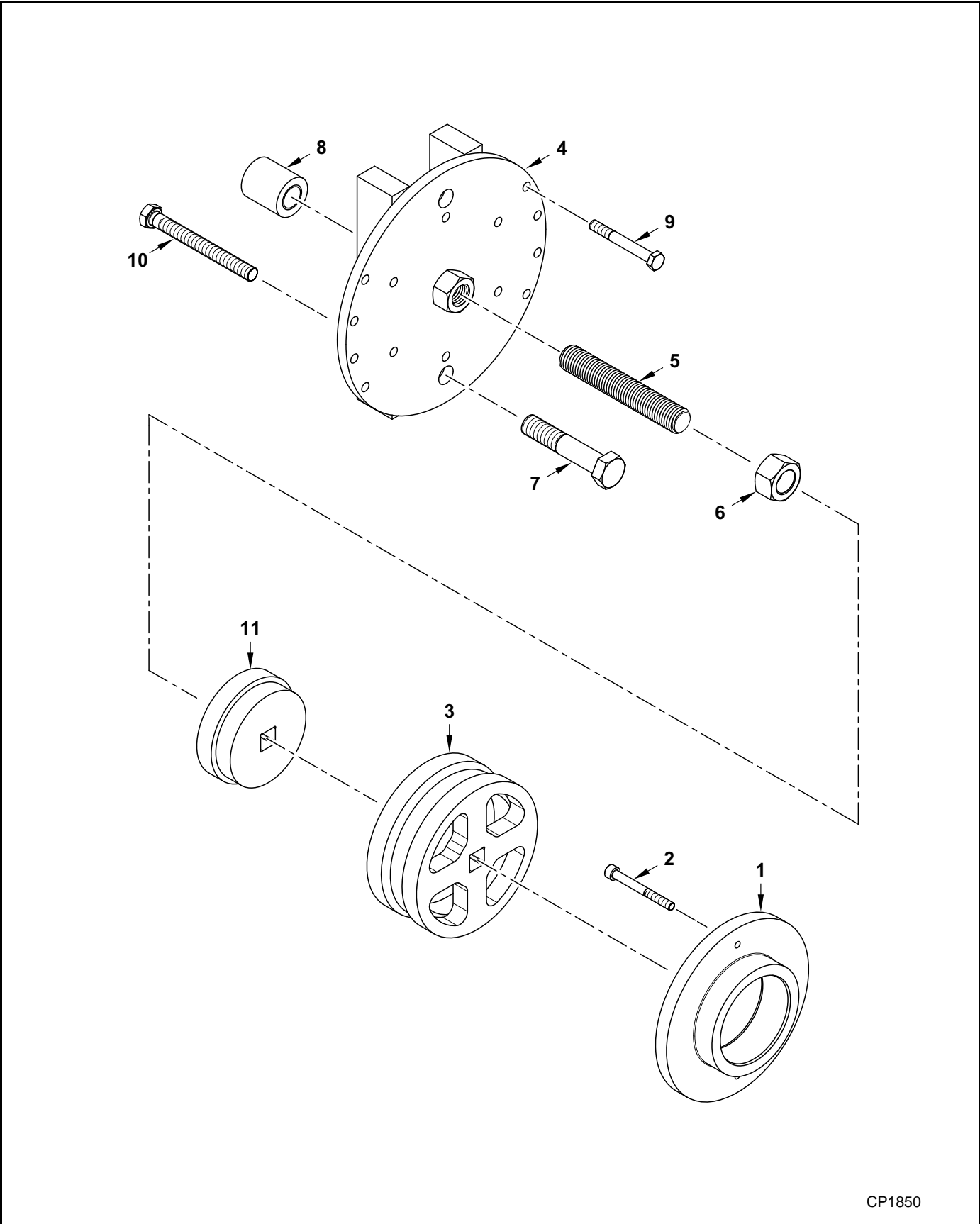
CP1843

24D18C HD AXLE SYSTEM

Kit, Scraper

Ref.	FN	Part Number	Qty.	Description
		2A-1867-100	1	KIT, Scraper, Mud, Includes items 1 - 2
1		2C-4481-100	2	PLATE, Scraper
2		2F-0079	4	BOLT, Hex Flg., M12 x 20, Cl 10.9

Special Tools, CTS Service Tool Kit



CP1850

SPECIAL TOOLS

CTS Service Tool Kit

Ref.	FN	Part Number	Qty.	Description
		2P-0208	1	PLATE ASSY., Mounting, Includes items 1- 11
		2P-0091	1	PLATE ASSY., Mounting, Includes items 1 & 2
1		2P-0081	1	PLATE, Mounting
2		2F-0257	2	BOLT, Hex, M8 x 75, CI 10.9
3		2P-0084	1	SOCKET, Spanner, 100mm
		2P-0080	1	PLATE ASSY., Mounting, Includes items 4 - 11
4		2S-1257	1	PLATE, Mounting
		2M-0255	1	BOLT ASSY., Mounting Rod, Includes 5 & 6
5		2M-0254	1	BOLT, Mounting Rod, 6" x 1"
6		3F-0124	1	NUT, Hex, 1" -8
7		2F-0312	2	BOLT, Hex, M20 x 100, CI 10.9
8		2M-0236	1	SPACER, Swivel Pad 1"
9		2F-0441	8	BOLT, Hex, M10 x 80, CI 10.9
10		2F-0500	3	BOLT, Hex, M14 x 130, CI 10.9
11		2P-0085	1	SOCKET, Spanner, Idler and Midroller Axles

